

Abuse and Neglect of Children and Adults with Developmental Disabilities: A Course for Health and Other Professionals

Start-up Instructions:

Step 1: Insert the Compact Disc into the CD-ROM drive

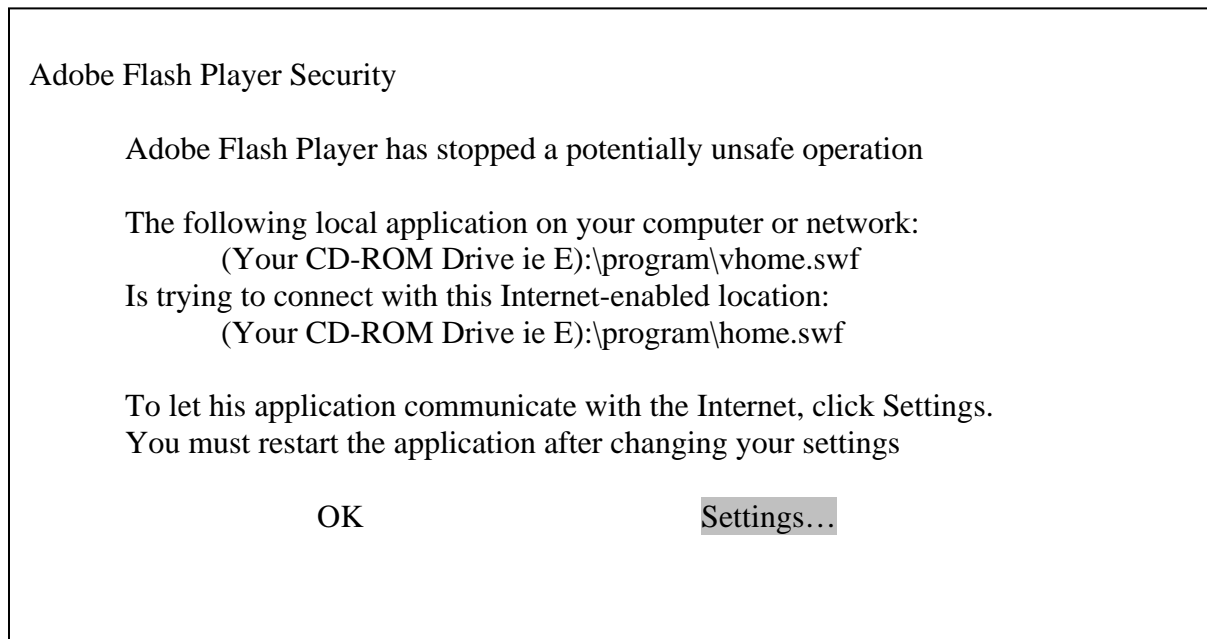
Step 2: From the Windows Desktop, double click the My Computer icon

Step 3: Double-click the icon representing your CD-ROM drive (D:, E:, F:, etc)

Step 4: To install the Flash Player double-click on the Install Flash Player 7 Icon. If Flash Player is already installed, go to Step 5.

Step 5: Double-click the icon titled 3-Startprogramhtm.htm to start the course.

Adobe Flash Player problems accessing the Text/Video and the Audio/Video Versions:
You will get an error screen that states:



Click the Settings Box on this pop-up error

Clicking this brings up a new internet browser that takes you directly to "Flash Player Help: Global Security Settings Panel" page.

On this page there is a box near the top that says:

Adobe Flash Player Settings Manager
Global Security Settings

Instructions:

You want to click the circle to the left of “Always Allow” (the center selection), until the little black dot appears in that circle.

To finalize this as your selection: click the 3rd tab along the top of the box (an earth with a padlock)

Now close the internet browser and the opened program if you haven’t already done so.

Now you can go through Steps 1-5 of the start-up instructions again.

Any problems, questions, or concerns please contact us at:

Program Development Associates
5620 Business Ave
Suite B
Cicero-NY 13039-9576
Phone: 1-800-543-2119 (toll-free)
Fax: 315-452-0710
Email: info@disabilitytraining.com
Website: www.disabilitytraining.com